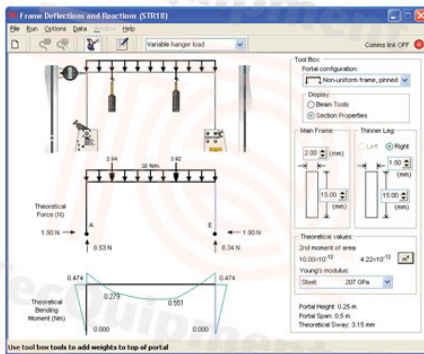


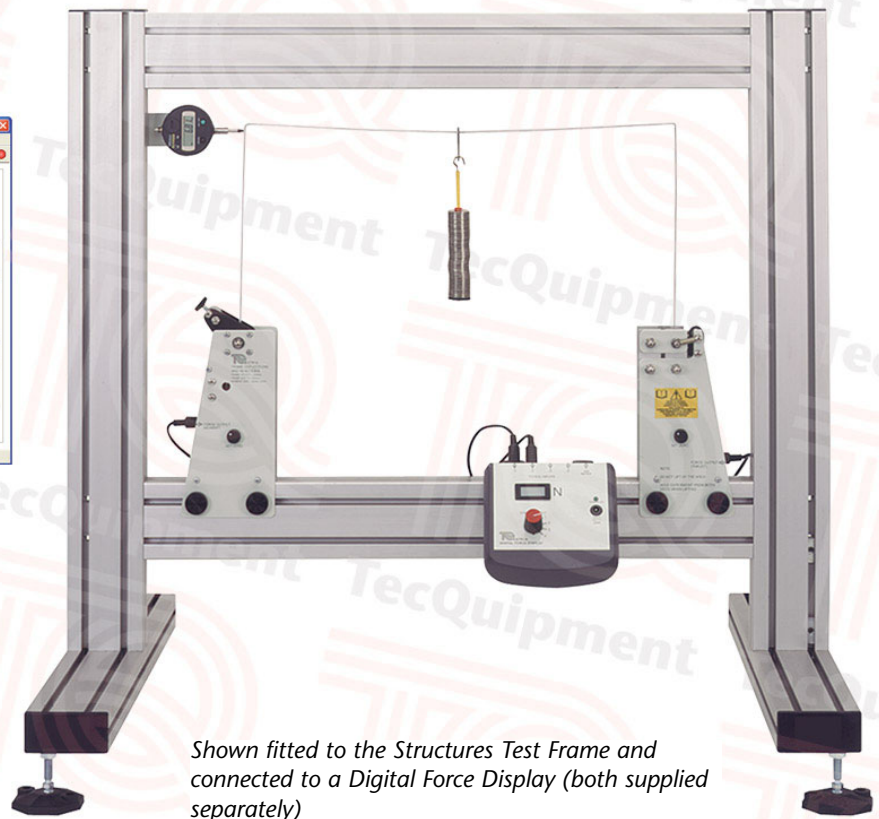
STR18

Frame Deflections and Reactions

For studying rectangular portals subjected to vertical loads



A screenshot of the optional TecEquipment Structures Software



Shown fitted to the Structures Test Frame and connected to a Digital Force Display (both supplied separately)

- High-quality structures teaching module for students of mechanical, civil and structural engineering
- Allows safe and practical experiments into frame deflections and reactions
- Realistic and verifiable experiment results
- Optional TecEquipment's Structures Software package for extra, 'virtual' experiments, that simulate and confirm the results from your hardware and allow extended experiments
- Optional STR2000 unit with TecEquipment's Structures Software package for automatic data acquisition **and** virtual experiments
- One of many interchangeable experiment modules from TecEquipment's modern, flexible and cost-effective structures teaching system
- Ideal for classroom demonstrations, or students working in pairs or small groups

- TecEquipment Ltd, Bonsall Street, Long Eaton, Nottingham NG10 2AN, UK
- T +44 115 972 2611 • F +44 115 973 1520 • E info@tecquipment.com • W www.tecquipment.com
- An ISO 9001 certified company

STR18

Frame Deflections and Reactions

Description

The experiment hardware fits onto a Structures Test Frame (STR1, available separately). The hardware includes two rectangular portal frames with the same dimensions. However, one of the frames has a constant second moment of area, while the other has one leg with a smaller second moment of area.

Students clamp each leg of one of the portal frames to supports attached to the test frame. They then load the top of the portal frame using masses on a hanger. Load cells on the supports connect to a Digital Force Display (STR1a, available separately). These measure the moment at one end of the portal frame and the horizontal reaction at the other. A digital deflection indicator measures sway at the top of the portal frame.

Students use the results of moments and reactions to plot bending moment diagrams. They compare the bending moment diagrams, the direction of sway (and its causes) to theoretical calculations. They then repeat the experiment using the other portal frame.

The lecturer guide provides details of the equipment including sample experiment results. The student guide describes how to use the equipment and gives experiment procedures.

For extra 'virtual' experiments, TecQuipment can supply the optional TecQuipment Structures Software (STRS), for use on a suitable computer. The virtual experiments simulate the tests you can perform with the hardware. They also extend the choice of tests beyond that available using only the hardware, for example: higher loads, uniform loads or different test specimens. This extends the student's learning experience.

For automatic data acquisition of your experiment results, TecQuipment can supply the optional Automatic Data Acquisition Unit (STR2000). Supplied as standard with the STR2000 is TecQuipment's Structures Software that displays and logs your experiment results and gives the extra virtual experiments.

Standard Features

- Supplied with lecturer guide and student guide
- Two-year warranty
- Made in accordance with the latest European Union directives

Experiments

Study and comparison of load, horizontal reactions, fixing moments, sway and shear forces in a:

- rectangular portal with a uniform section; and
- rectangular portal with a non-uniform section

Essential Ancillaries

- Structures Test Frame (STR1)
- Digital Force Display (STR1a)

Recommended Ancillaries

- Structures Software (STRS) for virtual experiments
- or
- Automatic Data Acquisition Unit (STR2000) for automatic data acquisition and virtual experiments

Operating Conditions

Operating environment:

Laboratory environment

Storage temperature range:

-25°C to +55°C (when packed for transport)

Operating temperature range:

+5°C to +40°C

Operating relative humidity range:

80% at temperatures < 31°C decreasing linearly to 50% at 40°C

Specifications

Nett dimensions and weight:

700 x 610 x 60 mm and 4 kg

Packed dimensions and weight:

Approximately 0.12 m³ and 6 kg

Portal frames:

Two, of aluminium alloy, nominally 250 mm x 500 mm, one with a uniform section, one with a non-uniform section

Load application:

Five weight hangers and 150 x 10 g masses

Accessories:

- Cable to connect to a Digital Force Display
- Vernier
- Rule