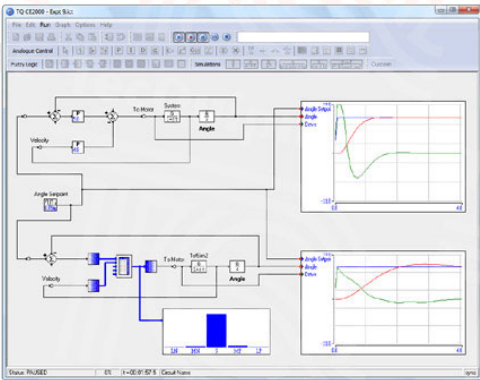


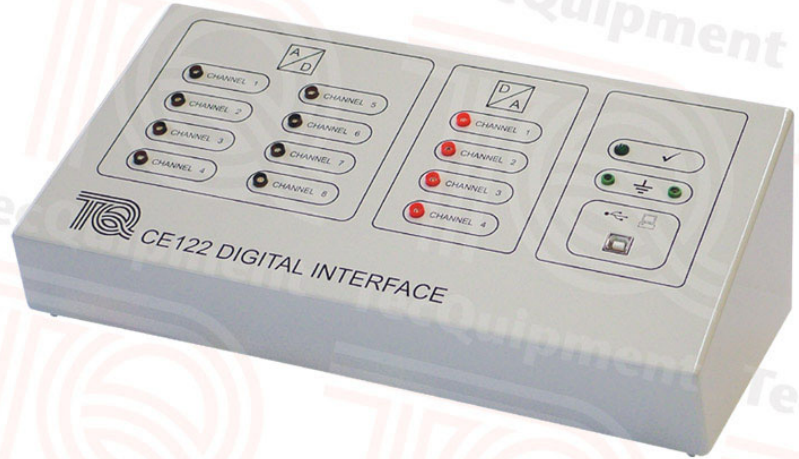
CE122

Digital Interface

Electronic interface that connects TecEquipment’s Control Engineering (CE) range to a suitable computer for computer control and data acquisition



A typical screenshot of the CE2000 software (supplied)



- Compact, bench-mounting unit
- All inputs and outputs are low voltage and buffered for educational use
- Supplied with TecEquipment’s Control Software (CE2000) for control and data acquisition
- Fully digital – needs no user adjustments
- Simple-to-use input and output connections
- Connects to products in TecEquipment’s Control Engineering range
- Can work as an interface to other compatible laboratory equipment for computer control and data acquisition
- Connects to most modern computers

Description

The Digital Interface is for use with most products in TecEquipment’s Control Engineering range, but it will work with any other compatible laboratory equipment.

It is an alternative to the CE120 Controller, when the user only needs the interface part of the CE120.

It converts analogue inputs from other equipment into digital signals for a computer. It also converts the digital signals from a computer into analogue signals to control other equipment.

It will allow the user to monitor up to eight input signals and control up to four output signals.

Supplied with the CE122 is TecEquipment’s CE2000 Control Software (see separate datasheet for details).

Standard Features

- Supplied with comprehensive user guide
- Two-year warranty
- Made in accordance with the latest European Union directives

- TecEquipment Ltd, Bonsall Street, Long Eaton, Nottingham NG10 2AN, UK
- T +44 115 972 2611 • F +44 115 973 1520 • E info@tecquipment.com • W www.tecquipment.com
- An ISO 9001 certified company



CE122

Digital Interface

Essential Ancillaries

- Suitable computer with two spare USB connections (not supplied by TecEquipment) – refer to CE2000 datasheet for full details.

Selected products in TecEquipment's Control Engineering range:

- Thermal Process Control (CE103)
- Coupled Tanks (CE105 and CE105 MV)
- Ball and Beam (CE106)
- Engine Speed Control (CE107)
- Coupled Drives (CE108)
- Ball and Hoop (CE109)
- Servo Trainer (CE110)

Essential Services

Electrical supply:

240/110 VAC, 1 A, 50/60 Hz, with earth

Other voltages and frequencies available to special order

Bench space needed:

400 mm x 300 mm

Operating Conditions

Operating environment:

Laboratory environment

Storage temperature range:

-25°C to +55°C (when packed for transport)

Operating temperature range:

+5°C to +40°C

Operating relative humidity range:

80% at temperatures < 31°C decreasing linearly to 50% at 40°C

Sound Levels

Less than 70 dB(A)

Specifications

Nett dimensions and weight:

360 x 170 x 125 mm, 3.6 kg

Packed dimensions and weight:

0.04 m³, 4.7 kg (approx – packed for export)

Input and outputs:

Eight A-D inputs: ±10 V

Four D-A outputs: ±10 V

Type B USB socket connection for a suitable computer

- TecEquipment Ltd, Bonsall Street, Long Eaton, Nottingham NG10 2AN, UK
- **T** +44 115 972 2611 • **F** +44 115 973 1520 • **E** info@tecquipment.com • **W** www.tecquipment.com
- An ISO 9001 certified company