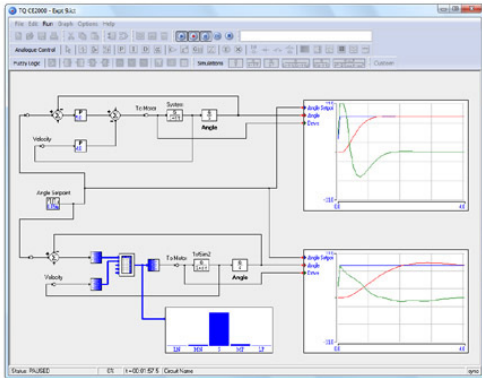




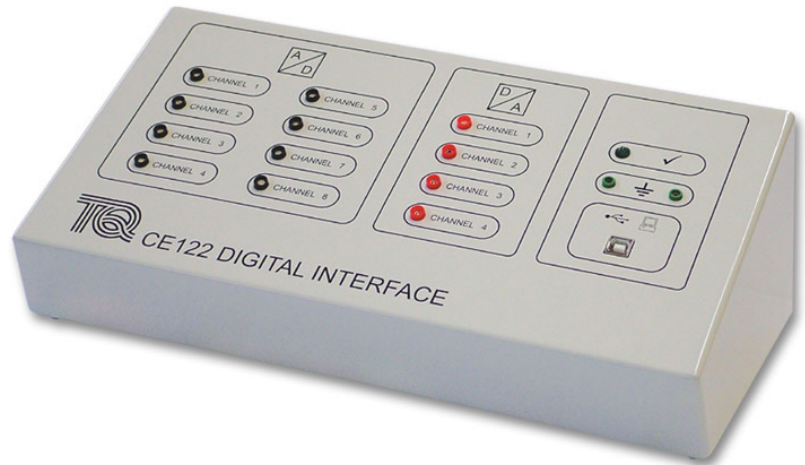
## ≡ DIGITAL INTERFACE

### CE122

A self-contained, computer-based controller designed to support practical investigations, covering the basic and advanced principles of control engineering at all academic levels.



TYPICAL SCREENSHOT OF THE CE2000 SOFTWARE (SUPPLIED)



### KEY FEATURES

- Compact, benchtop unit
- Easy to connect, low-voltage inputs and outputs are buffered for educational use
- Supplied with TecQuipment’s Control Software (CE2000) for control and data acquisition
- Fully digital, needs no user adjustments
- Can work as an interface to other compatible laboratory equipment for computer control and data acquisition
- Connects to most modern computers



# ≡ DIGITAL INTERFACE

CE122

## DESCRIPTION

The Digital Interface is for use with most products in TecQuipment's Control Engineering range, but it will also work with any other compatible laboratory equipment.

It is an alternative to the CE120 Controller, when the user only needs the interface part of the CE120.

It converts analogue inputs from other equipment into digital signals for a computer. It also converts the digital signals from a computer into analogue signals to control other equipment.

It will allow the user to monitor up to eight input signals and control up to four output signals.

The interface includes a copy of TecQuipment's CE2000 Control Software (see separate datasheet for details).

## AVAILABLE EXPERIMENT MODULES

Selected products in TecQuipment's Control Engineering range:

- Thermal Process Control (CE103)
- Coupled Tanks (CE105 and CE105 MV)
- Ball and Beam (CE106)
- Coupled Drives (CE108)
- Ball and Hoop (CE109)
- Servo Trainer (CE110)

## STANDARD FEATURES

- Supplied with comprehensive user guide
- Five-year warranty
- Made in accordance with the latest European Union directives
- ISO9001 certified manufacturer

## ESSENTIAL ANCILLARIES

Suitable computer with two spare USB connections (not supplied by TecQuipment) – refer to CE2000 datasheet for full details.

## ESSENTIAL SERVICES

### ELECTRICAL SUPPLY:

90 VAC to 250 VAC 65 mA, 50/60 Hz, with earth

### BENCH SPACE NEEDED:

400 mm x 300 mm

## OPERATING CONDITIONS

### OPERATING ENVIRONMENT:

Laboratory

### STORAGE TEMPERATURE RANGE:

-25°C to +55°C (when packed for transport)

### OPERATING TEMPERATURE RANGE:

+5°C to +40°C

### OPERATING RELATIVE HUMIDITY RANGE:

80% at temperatures < 31°C decreasing linearly to 50% at 40°C

## SOUND LEVELS

Less than 70 dB(A)

## SPECIFICATIONS

TecQuipment is committed to a programme of continuous improvement; hence we reserve the right to alter the design and product specification without prior notice.

### NETT DIMENSIONS AND WEIGHT:

360 x 170 x 125 mm, 3 kg

### PACKED DIMENSIONS AND WEIGHT:

0.04 m<sup>3</sup>, 4.7 kg (approx – packed for export)

### INPUT AND OUTPUTS:

Eight A-D inputs: ±10 V

Four D-A outputs: ±10 V

Type B USB socket connection for a suitable computer

### OTHER PARTS INCLUDED:

Connecting cables