



FC300 FLUME ANCILLARIES (DATASHEET 3 OF 6)
FLUMES

Optional flumes for use with TecQuipment's 300 mm Flumes (FC300 range).



VENTURI FLUME (FC300F)

A pair of Venturi sides to fit into the channel allowing demonstrations of flow measurement techniques used in rivers and waterways.



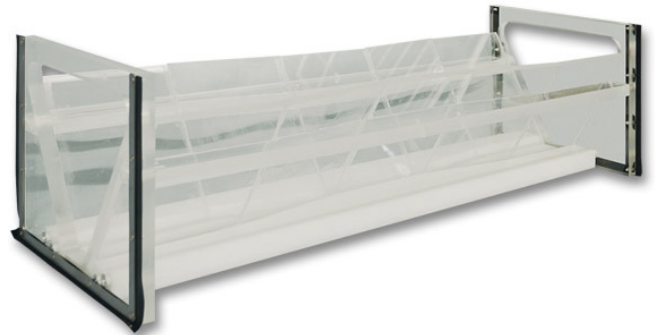
PARSHALL FLUME (FC300H)

A profiled base and sides to demonstrate how the flow in an open channel can be measured using a Parshall Flume.



CULVERT (FC300P)

A pair of clear culvert models, one of circular and one of rectangular section. Enabling the observation and calculation of both open and orifice flow in a culvert.



TRAPEZOIDAL FLUME (FC300Z)

A clear acrylic 60° trapezoidal flume to enable the measurement of flows with the emphasis on low flow situations.



FLUMES

STANDARD FEATURES

- Five-year warranty
- Manufactured in accordance with the latest European Union directives
- ISO9001 certified manufacturer

EXPERIMENTS FOR

- Flow Channel (FC300)

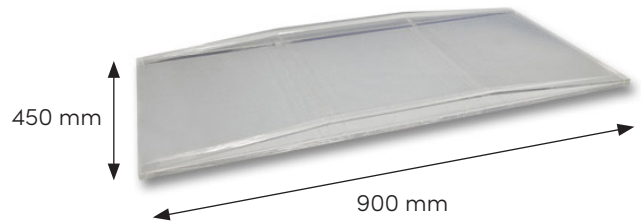
SPECIFICATIONS

TecEquipment is committed to a programme of continuous improvement; hence we reserve the right to alter the design and product specification without prior notice.

VENTURI FLUME (FC300F)

DIMENSIONS (EACH SIDE): Length: 900 mm; height: 450 mm; depth: 40 mm

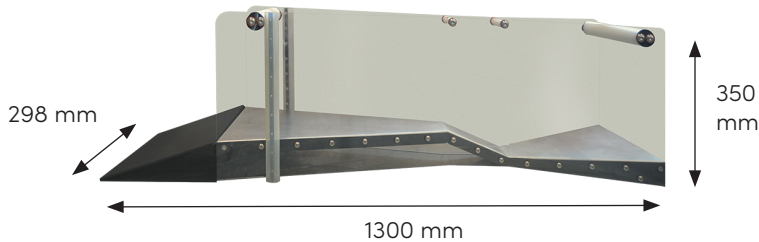
WEIGHT: 10 kg



PARSHALL FLUME (FC300H)

DIMENSIONS: Length: 1300 mm; height: 350 mm; width: 298 mm

WEIGHT: 11 kg



CULVERT (FC300P)

CIRCULAR

DIMENSIONS: Length: 1600 mm; diameter: 200 mm; bore: 125 mm

WEIGHT: 8 kg

RECTANGULAR

DIMENSIONS: Length: 1600 mm; diameter: 200 mm; aperture: 125 mm x 90 mm

WEIGHT: 14 kg

MOUNT

DIMENSIONS (EACH END): Height: 545 mm; width: 450 mm; depth: 70 mm

WEIGHT: 8 kg



TRAPEZOIDAL FLUME (FC300Z)

DIMENSIONS: Length: 925 mm; height: 250mm, width: 298mm

WEIGHT: 13kg

