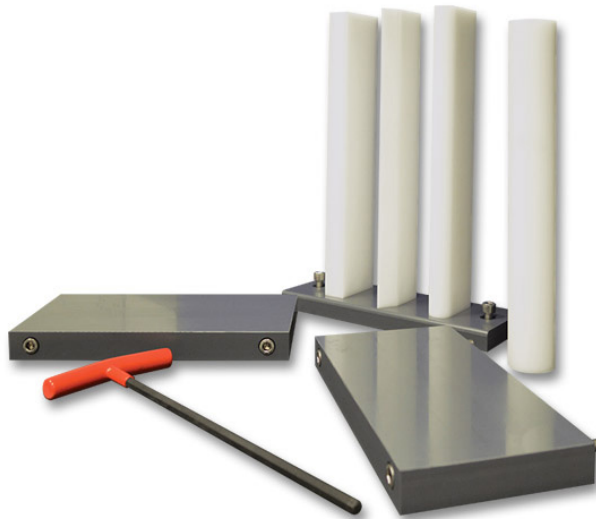




FC300 FLUME ANCILLARIES (DATASHEET 6 OF 6)

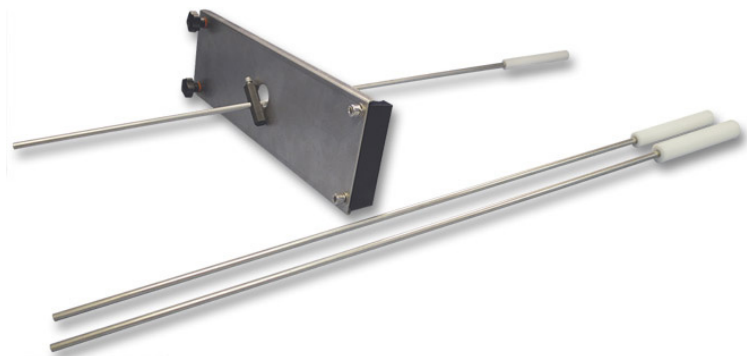
PIERS AND VORTEX INDUCED VIBRATIONS

Optional piers and vortex shedding apparatus for use with TecEquipment's 300mm Flumes (FC300 range).



BRIDGE PIERS (FC300J)

A pair of sediment walls and four differently profiled bridge piers. The apparatus is used to observe the increased flow velocity and the streamline curvature between the piers. Also scouring of the stream bed.



VORTEX INDUCED VIBRATIONS (FC300M)

The vortex shedding apparatus demonstrates that the drag force of water induces a suspended pendulum to shed vortices from alternate sides (a Karman vortex street).



PIERS AND VORTEX INDUCED VIBRATIONS

STANDARD FEATURES

- Five-year warranty
- Manufactured in accordance with the latest European Union directives
- ISO9001 certified manufacturer

EXPERIMENTS FOR

- Flow Channel (FC300)

SPECIFICATIONS

TecEquipment is committed to a programme of continuous improvement; hence we reserve the right to alter the design and product specification without prior notice.

BRIDGE PIERS (FC300J)

HOLDER

DIMENSIONS: Height: 100 mm; width 298 mm; depth: 20 mm

WEIGHT: 1 kg

EACH SAND WALL WITH SCREWS FITTED

DIMENSIONS: Height: 28 mm; depth: 170 mm; width 298 mm

WEIGHT: 2 kg

RECTANGULAR PIER

DIMENSIONS: Height: 350 mm; width: 28 mm; depth: 70 mm

WEIGHT: 1 kg

CYLINDRICAL PIER

DIMENSIONS: Height: 350 mm; diameter: 50 mm

WEIGHT: 1 kg

ROUND NOSED PIER

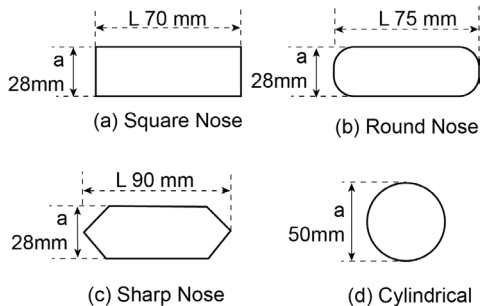
DIMENSIONS: Height: 350 mm; width 28 mm; length 75 mm

WEIGHT: 1 kg

SHARP NOSED PIER

DIMENSIONS: Height: 350 mm; width: 28 mm; length: 90 mm

WEIGHT: 1 kg



VORTEX INDUCED VIBRATIONS (FC300M)

WEIGHT:

3 kg

CARRIER

DIMENSIONS: Width across channel: 462mm; width: 125 mm; depth: 40mm

PENDULUMS

DIMENSIONS: Length: 850 mm; 1 each of 16, 20 and 24 mm diameter

