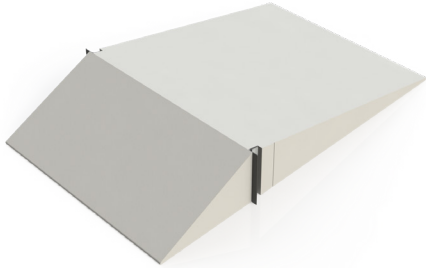




FC300 FLUME ANCILLARIES (DATASHEET 2 OF 6)

WEIRS

Optional weirs for use with TecQuipment's 300 mm Flumes (FC300 range).



CRUMP WEIR (FC300D)

A crump weir model used to demonstrate alternative flow measurement techniques used in rivers and waterways.



NOTCHED WEIRS (FC300Q)

The notch weir set works over a range of flows to allow experiments that show the relationship between flow and head and how the weirs can be used to measure flow. The apparatus includes a holder and three standard notches, one rectangular and two "V" notch. It also includes an advanced set of two notches, Cipoletti (trapezoidal) and a Sutro notch for more experiments.



BROAD CRESTED WEIRS (FC300R)

TecQuipment's broad crested weirs consists of two model weirs sufficiently wide to prevent the jet from springing clear at the upstream corner. The models supplied are one block with rounded upstream and downstream corners and a similar block with sharp edges.



WEIRS

STANDARD FEATURES

- Five-year warranty
- Manufactured in accordance with the latest European Union directives
- ISO9001 certified manufacturer

EXPERIMENTS FOR

- Flow Channel (FC300)

SPECIFICATIONS

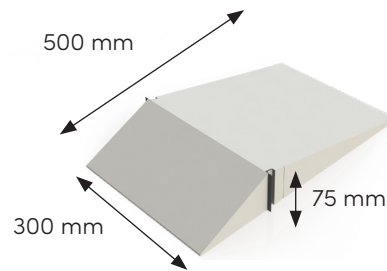
TecQuipment is committed to a programme of continuous improvement; hence we reserve the right to alter the design and product specification without prior notice.

CRUMP WEIR (FC300D)

DIMENSIONS:

Height: 75 mm; length: 500 mm; depth: 300 mm

WEIGHT: 6 kg



NOTCHED WEIRS (FC300Q)

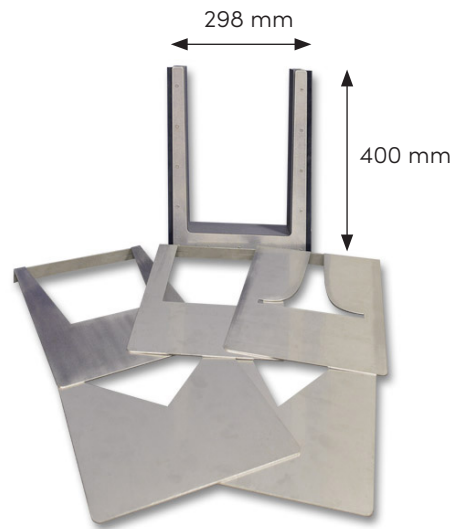
WEIGHT: 14 kg (including plates)

HOLDER

DIMENSIONS: Height: 400 mm; width: 298 mm; depth: 78 mm

EACH PLATE

DIMENSIONS: Height: 360 mm; width: 262 mm; depth: 28 mm



BROAD CRESTED WEIRS (FC300R)

SQUARE

DIMENSIONS: Length: 300 mm; width: 297 mm; depth: 125 mm

WEIGHT: 6 kg

STREAMLINED

DIMENSIONS: Length: 300 mm; width: 297 mm; depth: 125 mm

WEIGHT: 6 kg

