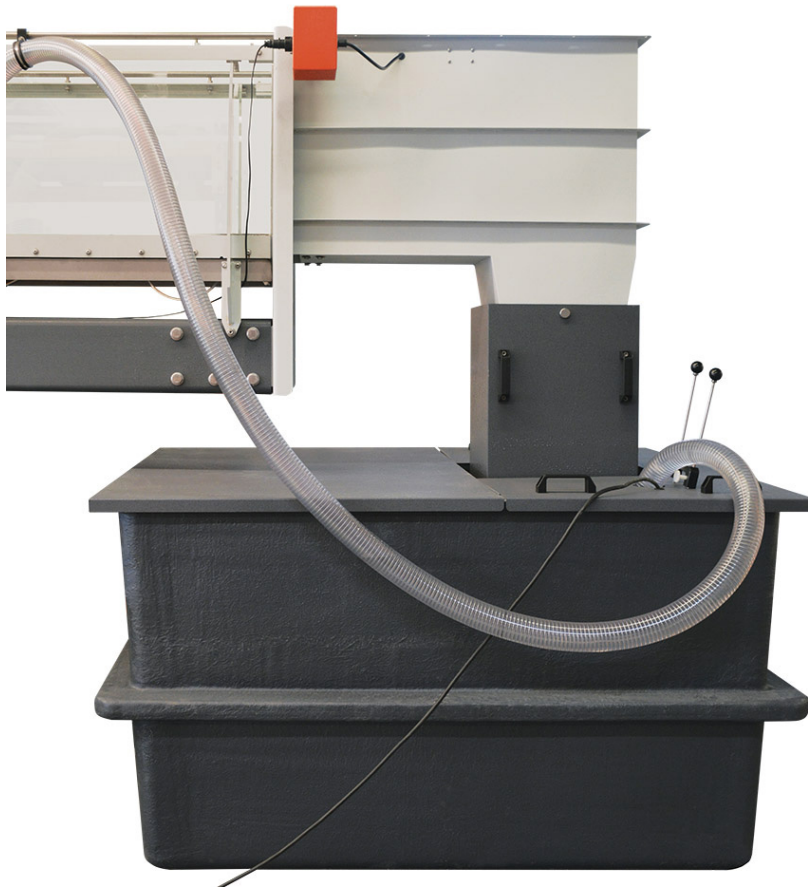




VDAS® FC300SL

SEDIMENT LOOP

An ancillary that allows sediment to be re-circulated continually into an FC300 series flow channel from a sediment vessel located in the outlet tank.



SEDIMENT VESSEL
(SHOWN FITTED TO THE OUTLET TANK)

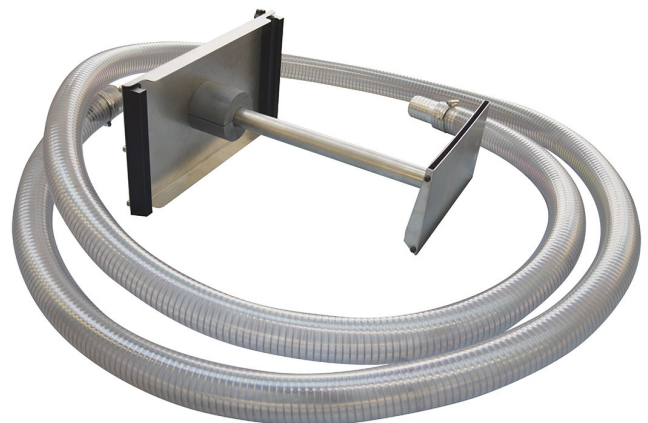
DESCRIPTION

The Sediment Loop (FC300sl) consists of a filter vessel fitted to the outlet tank of an FC300 series flow channel and a sediment discharge unit fitted in the channel, the two units are connected by the sediment tube.

Sediment (sand) is placed in the vessel where there is a pump that can pump sediment from the vessel along the sediment tube to the sediment discharge unit placed in the channel upstream of a sediment bed. The sediment loop pump is controlled by a control box hung on the FC300 instrument frame.

The whole apparatus allows sediment to be replenished in the channel. Any sediment that is washed into the channel transfer duct is caught in the sediment vessel ready to be re-circulated.

A mixture of sediment and water from the sediment vessel is pumped through the tube and out of the nozzle.



SEDIMENT DISCHARGE UNIT AND SEDIMENT TUBE



SEDIMENT LOOP

A pump is located inside the sediment vessel and is operated via the control box.

The control box is hung on the instrument frame of the FC300 flume. It is connected to a socket on the base of the FC300 control box.

The sediment tube is fixed to the top rail of the flume using the supplied fittings.



FC300SL CONTROL BOX

DETAILED SPECIFICATION

TecEquipment is committed to a programme of continuous improvement; hence we reserve the right to alter the design of a product specification without prior notice.

ELECTRICAL CONNECTION:

Single phase 110 VAC or 230 VAC (as supplied by the FC300 main control box).

NETT DIMENSIONS AND WEIGHTS:

SEDIMENT VESSEL (HOUSING THE PUMP):

790mm (height), 1248mm (width), 887mm (depth)

56kg (weight)

SEDIMENT DISCHARGE UNIT:

700mm (height), 460mm (width), 255mm (depth)

6.3kg (weight)

SEDIMENT TUBE:

60mm (outer diameter), nominally 10m (length), 1.2kg per metre (weight)

CONTROL BOX:

450mm (height), 190mm (width), 200mm (depth)

4.5 kg (weight)

OPERATING CONDITIONS

OPERATING ENVIRONMENT:

Laboratory

OPERATING TEMPERATURE RANGE:

5°C to 40°C

OPERATING RELATIVE HUMIDITY RANGE:

80% for temperatures up to 31°C, decreasing linearly to 50% relative humidity at 40°C

