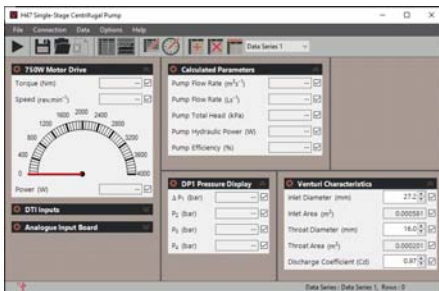


CENTRIFUGAL PUMP TEST SET

VDAS® H47

A self-contained, floor-standing mobile unit consisting of a water reservoir, pump, motor and Venturi meter for a comprehensive range of investigations into the performance and characteristics of a centrifugal pump. Demonstrates cavitation and the use of a Venturi tube.



SCREENSHOT OF THE OPTIONAL VDAS® SOFTWARE



TEST SET AND OPTIONAL VERSATILE DATA ACQUISITION UNIT (VDAS-F)

KEY FEATURES

- Self-contained, mobile centrifugal pump test set for a range of experiments and demonstrations
- Pump has a transparent 'window' to allow students to see clearly its impeller, the water flow and cavitation
- Demonstrates how to use a Venturi meter and differential pressure measurement to find flow rate
- Optional stroboscope allows students to see clearly the effects of cavitation around the pump impeller
- Motor drive has a digital display of pump speed, torque and calculated true 'shaft' power
- Optional easy-to-read analogue instrumentation
- Works with TecEquipment's Versatile Data Acquisition System (VDAS®)

≡ CENTRIFUGAL PUMP TEST SET

VDAS® H47

DESCRIPTION

A compact, mobile and fully self-contained centrifugal pump test set that allows students to find the characteristics of a centrifugal pump. It also allows them to see (and hear) cavitation and understand the use of a Venturi meter and differential pressure measurement to find flow rate.

A motor mounted in bearings drives the pump. The pump draws water from the integral reservoir. The water travels up through a valve and filter, through an inlet valve to the pump body, then out through a delivery valve. It then passes through a Venturi meter and returns to the reservoir for re-use. This self-contained water supply keeps water consumption to a minimum. The pump has a transparent 'window' so students can see the impeller turning and how the water vapour bubbles form in the pump at cavitation. The optional stroboscope makes the effect easier to see.

Instrument and control modules fit into a frame above and behind the pump. An electronic Motor Drive controls the pump speed. A strain gauge load cell measures the driving torque of the pump and a sensor measures pump speed. A display on the Motor Drive shows speed and torque and automatically calculates and displays true 'shaft' power.

The differential pressure across the Venturi gives flow rate. The adjustable inlet and delivery valves allow students to create different operating conditions.

TecEquipment supply a Digital Pressure Display (DP1) as standard but offer an optional, additional easy-to-read Analogue Pressure Display (AP1). Both instruments display the inlet pressure, delivery pressure and differential pressure across the Venturi. The Analogue Display is more visual, but the Digital Display increases ease of measurement, and allows connection to TecEquipment's frame-mounted Versatile Data Acquisition System (VDAS-F, available separately).

The equipment can use both analogue and digital instrumentation at the same time, enabling students to compare the different pressure measurement methods.

LEARNING OUTCOMES

Comprehensive demonstrations and investigations into a centrifugal pump including:

- Centrifugal pump performance and characteristics, typically head versus flow and efficiency versus flow
- Non-dimensional performance characteristics
- Flow measurement using a Venturi tube
- Demonstration of cavitation

STANDARD FEATURES

- Supplied with comprehensive user guide
- Five-year warranty
- Made in accordance with the latest European Union directives
- ISO9001 certified manufacturer

RECOMMENDED ANCILLARIES

- Versatile Data Acquisition System (VDAS-F) (frame-mounting version)
- Stroboscope (ST1)
- Analogue Pressure Display (AP1)



≡ CENTRIFUGAL PUMP TEST SET

VDAS® H47

ESSENTIAL SERVICES

ELECTRICAL SUPPLY (SPECIFY ON ORDER):

- Single phase, 220 – 240 VAC, 50 / 60 Hz, 13A

OR

- Two phase with neutral, 220 – 240 VAC, 50 / 60 Hz, 13A

FLOOR SPACE:

- Solid, level floor at least 3 m x 2 m

OPERATING CONDITIONS

OPERATING ENVIRONMENT:

Laboratory

STORAGE TEMPERATURE RANGE:

-25°C to +55°C (when packed for transport)

OPERATING TEMPERATURE RANGE:

+5°C to +40°C

OPERATING RELATIVE HUMIDITY RANGE:

30% to 95% (non-condensing)

SPECIFICATIONS

TecQuipment is committed to a programme of continuous improvement; hence we reserve the right to alter the design and product specification without prior notice.

DIMENSIONS:

Nett: Length 1200 mm x depth 600 mm x height 1600 mm

Packed: 1.5 m³

WEIGHT:

Nett: 110 kg

Packed: 200 kg

PUMP:

Centrifugal, approximately 2 L.s⁻¹ maximum flow rate and 120 kPa maximum head. Maximum speed 3000 rev.min⁻¹