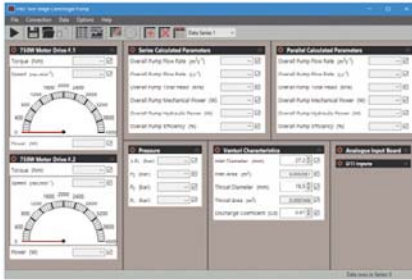




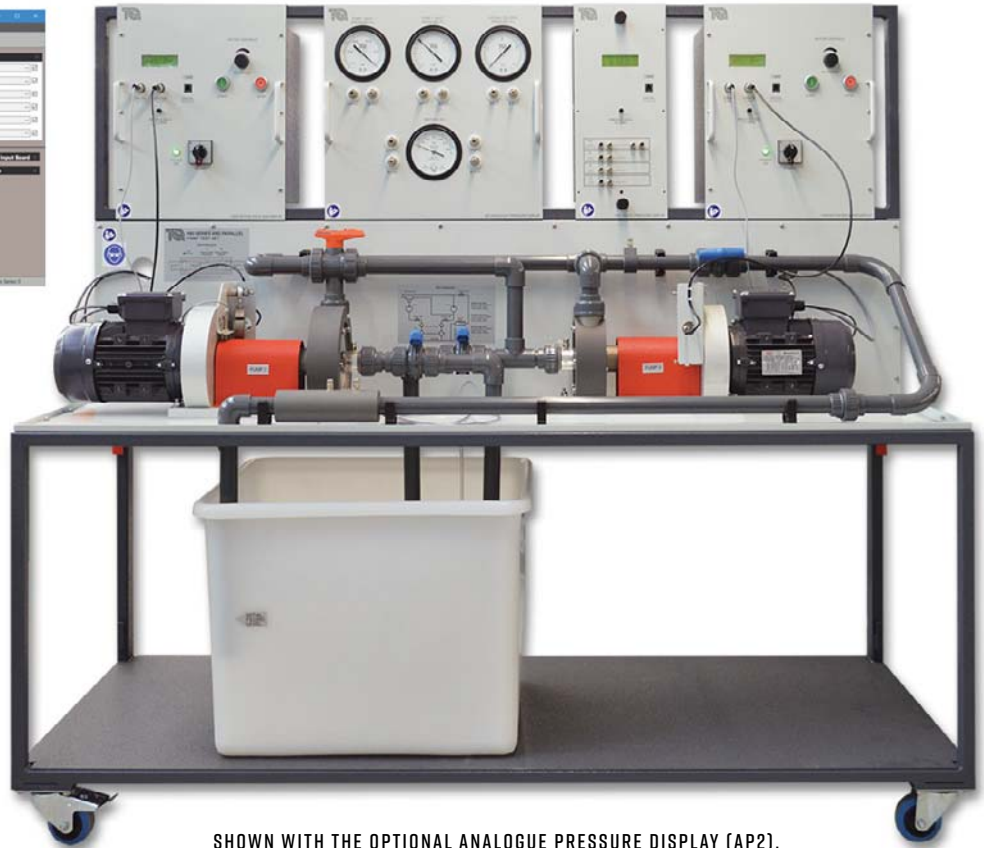
VDAS® H83

TWO-STAGE (SERIES AND PARALLEL) PUMPS

A self-contained, floor-standing mobile unit consisting of a water reservoir, two pumps and motors and a Venturi meter for a comprehensive range of investigations into the performance and characteristics of two centrifugal pumps in both series and parallel.



SCREENSHOT OF THE OPTIONAL VDAS® SOFTWARE



SHOWN WITH THE OPTIONAL ANALOGUE PRESSURE DISPLAY (AP2), AVAILABLE SEPARATELY

KEY FEATURES

- Self-contained, mobile two-stage centrifugal pump test set for a range of tests and demonstrations
- Pumps have a transparent 'window' to allow students to see clearly the impellers, the water flow and cavitation
- Pumps can be tested individually, in series and in parallel, with independent speed control
- Demonstrates how to use a Venturi meter and differential pressure measurement to find flow rate
- Optional stroboscope allows students to see clearly the effects of cavitation around a pump impeller
- Motor drives have digital displays of pump speed, torque and calculated true 'shaft' power
- Optional easy-to-read analogue instrumentation
- Works with TecEquipment's Versatile Data Acquisition System (VDAS®)



TWO-STAGE (SERIES AND PARALLEL) PUMPS

DESCRIPTION

A compact, mobile and fully self-contained centrifugal pump test set, that allows students to find the characteristics of centrifugal pumps working alone or in series or parallel. It also allows students to see (and hear) cavitation and understand the use of a Venturi meter and differential pressure measurement to find flow rate.

Two bearing-mounted motors drive each pump independently. The pumps draw water from the integral reservoir. The water travels through strainers and a series of valves to be delivered to a Venturi meter. The water then returns to the reservoir for re-use, keeping water use to a minimum. The pumps each have a transparent 'window' so students can see the impeller turning and how the water vapour bubbles form in the pump at cavitation. The optional stroboscope makes the effect easier to see.



Instrument and control modules fit into a frame above and behind the pumps. Each pump has an electronic motor drive to control its speed, a load cell to measure torque and a sensor to measure pump speed. A display on each motor drive shows speed and torque and automatically calculates and displays true 'shaft' power.

The differential pressure across the Venturi gives flow rate. Each pump has its own inlet valve. A two-way valve in the system allows the pumps to work alone, in parallel or in series.

TecEquipment supplies a Digital Pressure Display (DP1) as standard, but offers an optional additional easy-to-read Analogue Pressure Display (AP2). Both instruments display the inlet pressure, delivery pressure and differential pressure across the Venturi. The analogue display is more visual, but the digital display increases ease of measurement, and allows connection to TecEquipment's frame-mounted Versatile Data Acquisition System (VDAS-F, available separately).

The equipment can use both analogue and digital instrumentation at the same time, allowing students to compare the different pressure measurement methods.

LEARNING OUTCOMES

Comprehensive demonstrations and investigations into a centrifugal pump including:

- Centrifugal pump performance and characteristics, typically head versus flow and efficiency versus flow
- Non-dimensional performance characteristics
- Flow measurement using a Venturi tube
- Demonstration of cavitation
- Operation of centrifugal pumps in series
- Operation of centrifugal pumps in parallel

STANDARD FEATURES

- Supplied with comprehensive user guide
- Five-year warranty
- Made in accordance with the latest European Union directives
- ISO9001 certified manufacturer

RECOMMENDED ANCILLARIES

- Versatile Data Acquisition System – frame-mounting version (VDAS-F)
- Stroboscope (ST1)
- Analogue Pressure Display (AP2)

ESSENTIAL SERVICES

ELECTRICAL SUPPLY (SPECIFY ON ORDER):

- 2 x single-phase, 220-240 VAC, 50/60 Hz, 13A

OR

- 2 x two-phase with neutral, 220-240 VAC, 50/60 Hz, 13A

FLOOR SPACE NEEDED:

- Solid, level floor
- Allow at least 4 m x 2 m for safe and effective use of the equipment

TWO-STAGE (SERIES AND PARALLEL) PUMPS

OPERATING CONDITIONS

OPERATING ENVIRONMENT:

Laboratory

STORAGE TEMPERATURE RANGE:

-25°C to +55°C (when packed for transport)

OPERATING TEMPERATURE RANGE:

+5°C to +40°C

OPERATING RELATIVE HUMIDITY RANGE:

30% to 95% (non-condensing)

SPECIFICATIONS

TecEquipment is committed to a programme of continuous improvement; hence we reserve the right to alter the design and product specification without prior notice.

NETT DIMENSIONS AND WEIGHT:

Length 1670 mm x depth 650 mm x height 1590 mm and 140 kg

APPROXIMATE PACKED DIMENSIONS AND WEIGHT:

2.63 m³ and 280 kg

MAXIMUM FLOW RATES (EACH PUMP):

Approximately 2.2 L.s⁻¹

MAXIMUM TOTAL HEAD (EACH PUMP):

Approximately 120 kPa (120 kN.m⁻²)

MAXIMUM PUMP SPEEDS:

3000 rev.min⁻¹



SHOWN WITH THE OPTIONAL VDAS®-F UNIT, AVAILABLE SEPARATELY