



BRINELL HARDNESS TEST SET

SM1002C

Fits in the Compression Cage (SM1002b) of the Benchtop Tensile Testing Machine (SM1002) for Brinell hardness tests.



KEY FEATURES

- Fits in TecEquipment's Benchtop Tensile Testing Machine (SM1002) for Brinell hardness tests of different materials
- Includes specimens of different basic engineering materials
- Includes magnifier with graticule to accurately measure the indentation
- Works with TecEquipment's hardness test specimens (HTP)



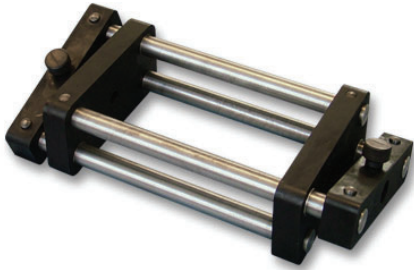
BRINELL HARDNESS TEST SET

SM1002C

DESCRIPTION

An extra experiment module for the test machine, parts of this Test Set fit into the optional Compression Cage (SM1002b) for simple Brinell Hardness tests. The set includes a magnifier with graticule (measurement scale) and test specimens made of basic engineering materials.

COMPRESSION CAGE (SM1002B)



An essential ancillary to the Brinell Hardness Test Set, this Compression Cage fits into the tensile test area of the Benchtop Tensile Testing Machine (SM1002), adapting the machine for experiments that need a compressive load.

STANDARD FEATURES

- Five-year warranty
- Manufactured in accordance with the latest European Union directives
- ISO9001 certified manufacturer

LEARNING OUTCOMES

- Brinell hardness tests of different basic engineering materials

ESSENTIAL BASE UNIT

- Benchtop Tensile Testing Machine (SM1002)

ESSENTIAL ANCILLARY

- Compression Cage (SM1002b)

RECOMMENDED ANCILLARIES

- Extra hardness specimens (HTP), see separate datasheet

OPERATING CONDITIONS

OPERATING ENVIRONMENT:

Laboratory

STORAGE TEMPERATURE RANGE:

-25°C to +55°C (when packed for transport)

OPERATING TEMPERATURE RANGE:

+5°C to +40°C

OPERATING RELATIVE HUMIDITY RANGE:

80% at temperatures < 31°C decreasing linearly to 50% at 40°C

SPECIFICATIONS

TecEquipment is committed to a programme of continuous improvement; hence we reserve the right to alter the design and product specification without prior notice.

SM1002C

NETT DIMENSIONS AND WEIGHT:

Packet of parts 200 mm x 200 mm x 200 mm and 1.2 kg

APPROXIMATE PACKED VOLUME AND WEIGHT:

0.008 m³ and 2.5 kg

HARDNESS TEST SPECIMENS INCLUDED (5 OF EACH)

- HTPAL aluminium
- HTPBR brass
- HTPMS 0.1% carbon steel
- HTPNY nylon

SM1002B

NETT DIMENSIONS AND WEIGHT:

260 mm x 130 mm x 70 mm and 4.8 kg

APPROXIMATE PACKED VOLUME AND WEIGHT:

0.008 m³ and 9.8 kg