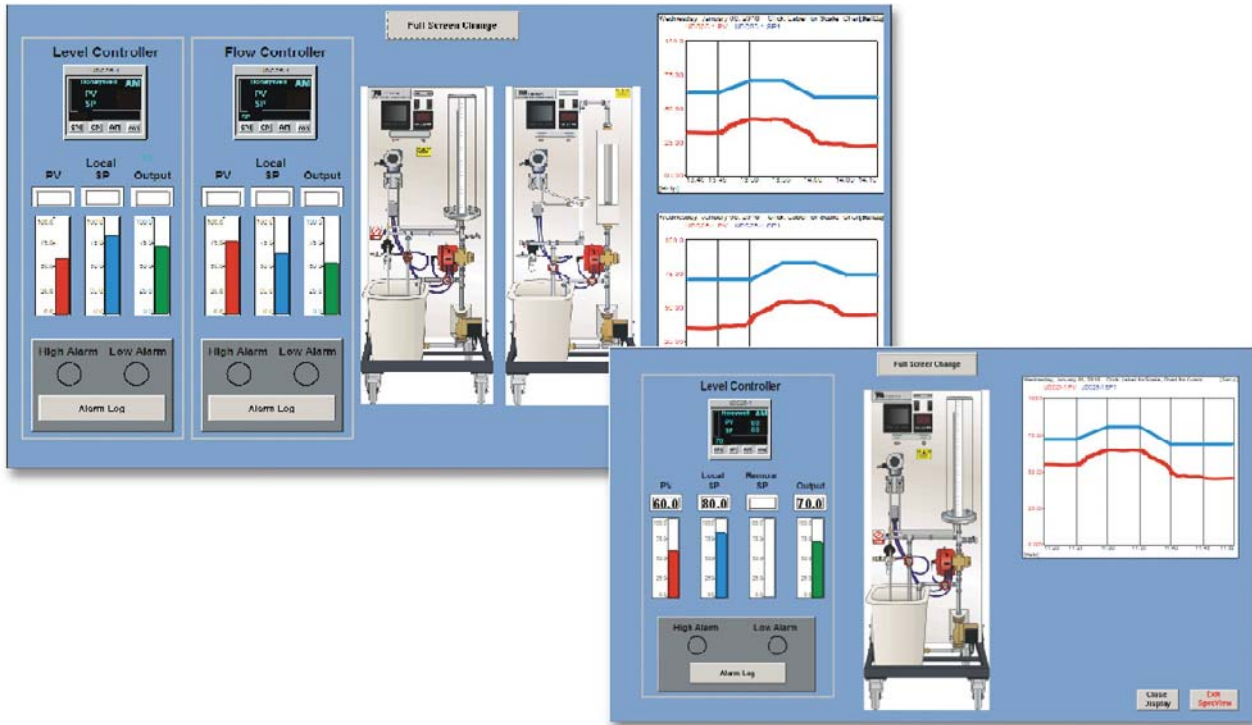




TE3300/06

COMPUTER CONTROL SYSTEM

Easy-to-use software that connects to the TE3300 process control modules for remote control and monitoring of processes (distributed control).



- Industry-standard software
- Colourful, easy-to-use on-screen mimics of the processes
- Includes high-specification computer, large monitor, keyboard and mouse
- Controls, monitors and logs all important process controller parameters
- Real-time displays of variables
- Live monitoring of process trends and alarms
- Ready-made applications – includes applications for use with TecQuipment’s products



COMPUTER CONTROL SYSTEM

DESCRIPTION

The Computer Control System (TE3300/06) is a computer control package for use with modules from TecEquipment's TE3300 Process Control range. It allows remote control and data acquisition from the controller of each process. This system will also control and collect data from the controllers of TE3300 modules when connected in cascade.

When used with the TE3300 Process Control range, computer control increases the student's experience of industry-standard process control.

The package includes a high-specification computer, with large screen monitor, keyboard and mouse. The package includes connections and cables for connection to the TE3300 modules. Supplied as standard on the computer is a suitable Microsoft® Windows® operating system.

The industry-standard control software includes applications specially written by TecEquipment for use with the TE3300 range. Just as in an industrial environment, the software applications mimic the variables measured by the controllers of each Process Control module. The user (operator) can easily see what happens at the remotely controlled process, as they adjust its performance.

The fully configurable software logs all data and any alarm conditions. The operator can also see the changing data in real time (as a trend) and log it for later examination. For ease of use, the software mimic (or graphical display window) and all data is in full colour.

STANDARD FEATURES

- Supplied with comprehensive user guides
- Five-year warranty
- Made in accordance with the latest European Union directives
- ISO9001 certified manufacturer

LEARNING OUTCOMES

When used with the TE3300 Process Control modules, computer control and monitoring of:

- Pressure process (TE3300/02)
- Flow process (TE3300/03)
- Level control process (TE3300/04)
- Temperature process (TE3300/05)
- Cascaded flow and pressure (TE3300/02 and TE3300/03)
- Cascaded flow and level (TE3300/03 and TE3300/04)

ANCILLARY FOR

One or more modules from the TE3300 Process Control range:

- Pressure Process Training System (TE3300/02)
- Flow Process Training System (TE3300/03)
- Level Process Training System (TE3300/04)
- Temperature Process Training System (TE3300/05)

ESSENTIAL SERVICES

ELECTRICAL SUPPLY:

Computer – specify supply at time of ordering

BENCH SPACE NEEDED:

Room for a computer, a mouse, a keyboard and a monitor

OPERATING CONDITIONS

OPERATING ENVIRONMENT:

Laboratory

STORAGE TEMPERATURE RANGE:

-25°C to +55°C (when packed for transport)

OPERATING TEMPERATURE RANGE:

+5°C to +40°C

OPERATING RELATIVE HUMIDITY RANGE:

30% to 95% (non-condensing)

SPECIFICATIONS

TecEquipment is committed to a programme of continuous improvement; hence we reserve the right to alter the design and product specification without prior notice.

SOFTWARE:

Full colour, industry-standard supervisory control and data acquisition (SCADA)

WEIGHT:

Computer, keyboard, mouse and monitor, approximately 25 kg

COMMUNICATIONS STANDARD:

Ethernet TCP/IP