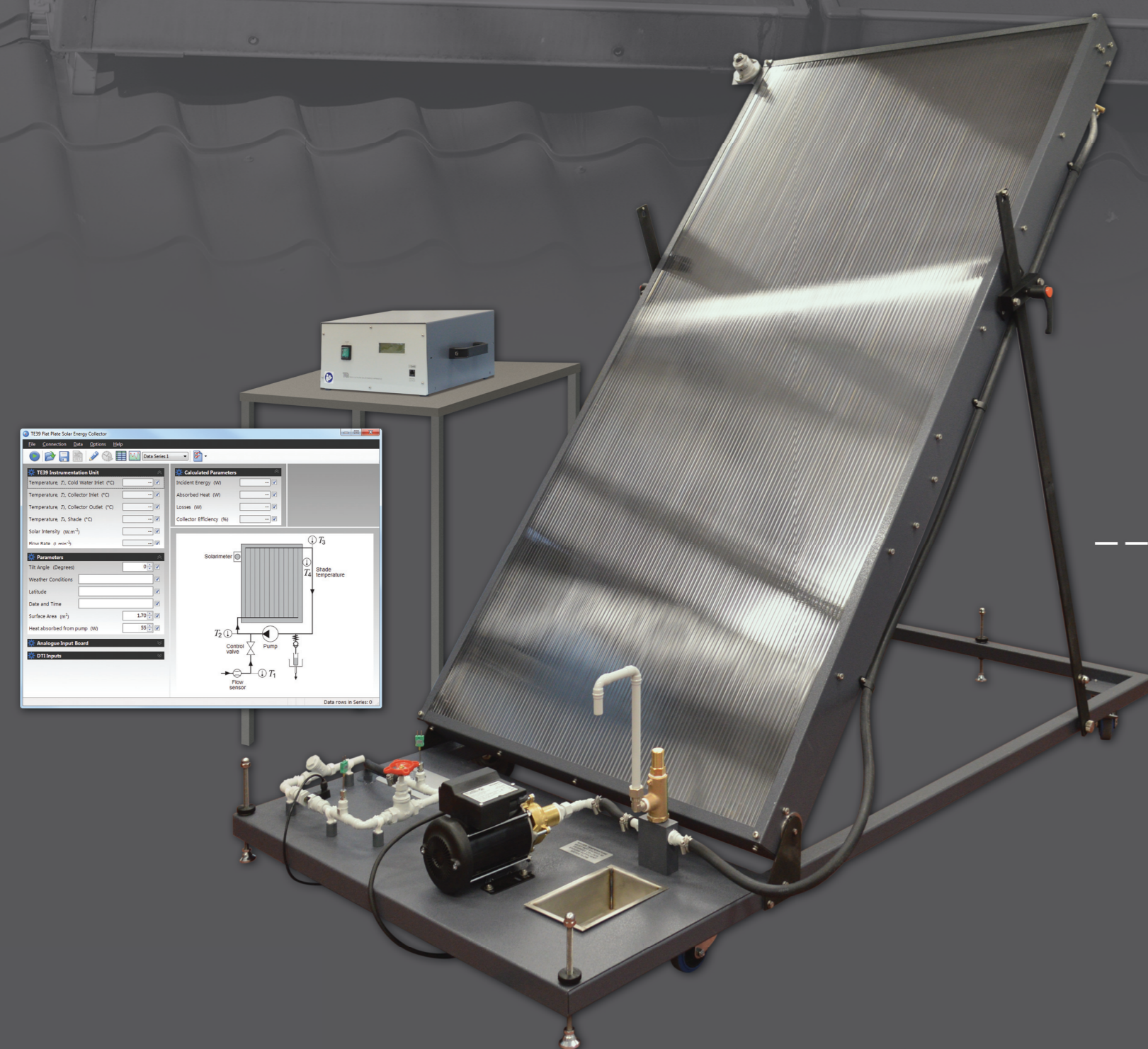


SOLAR ENERGY

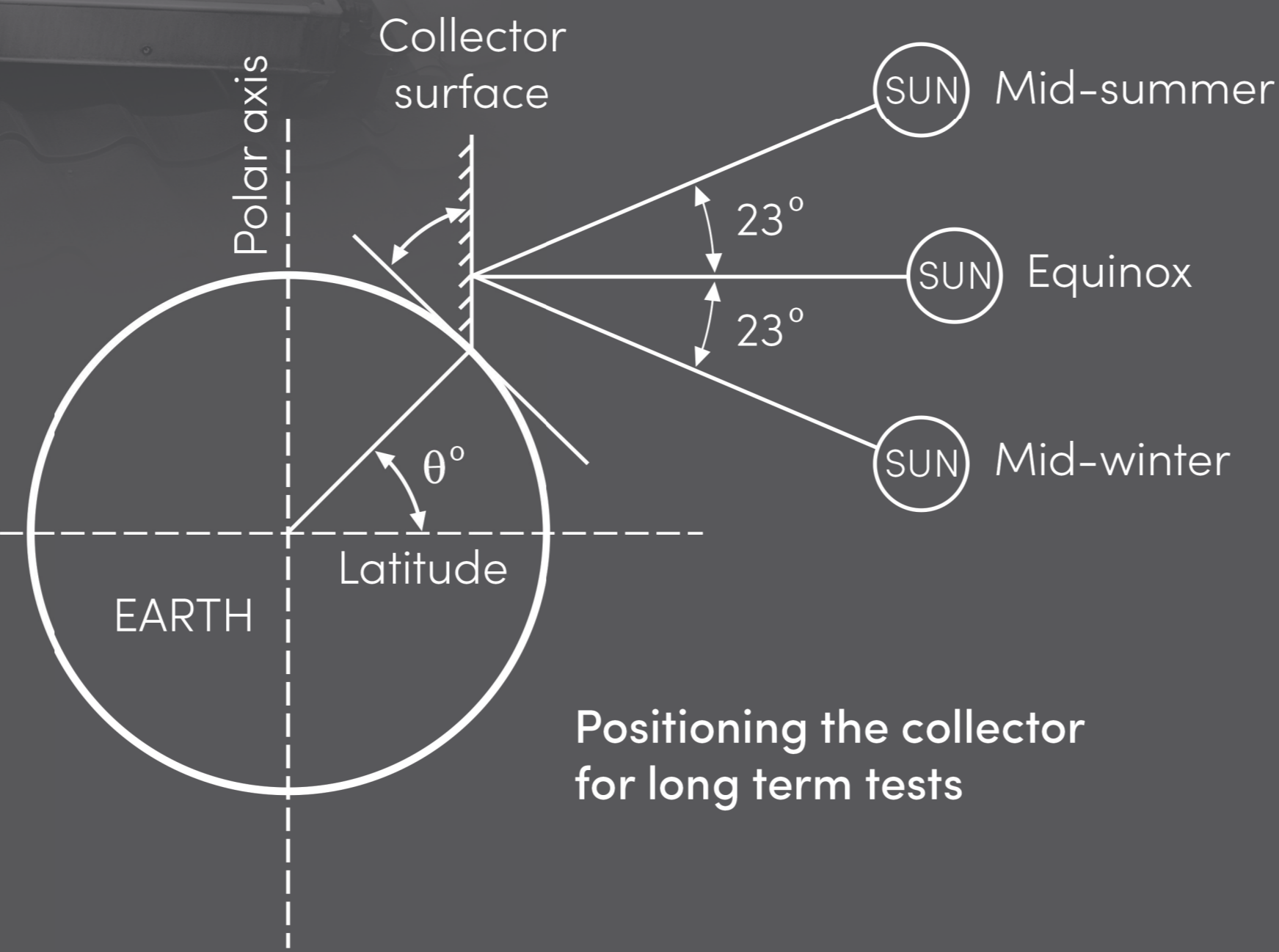
The **SOLAR CONSTANT** is defined as:
the rate at which energy is received from
the sun at a distance corresponding to
the mean radius of the earth's orbit.



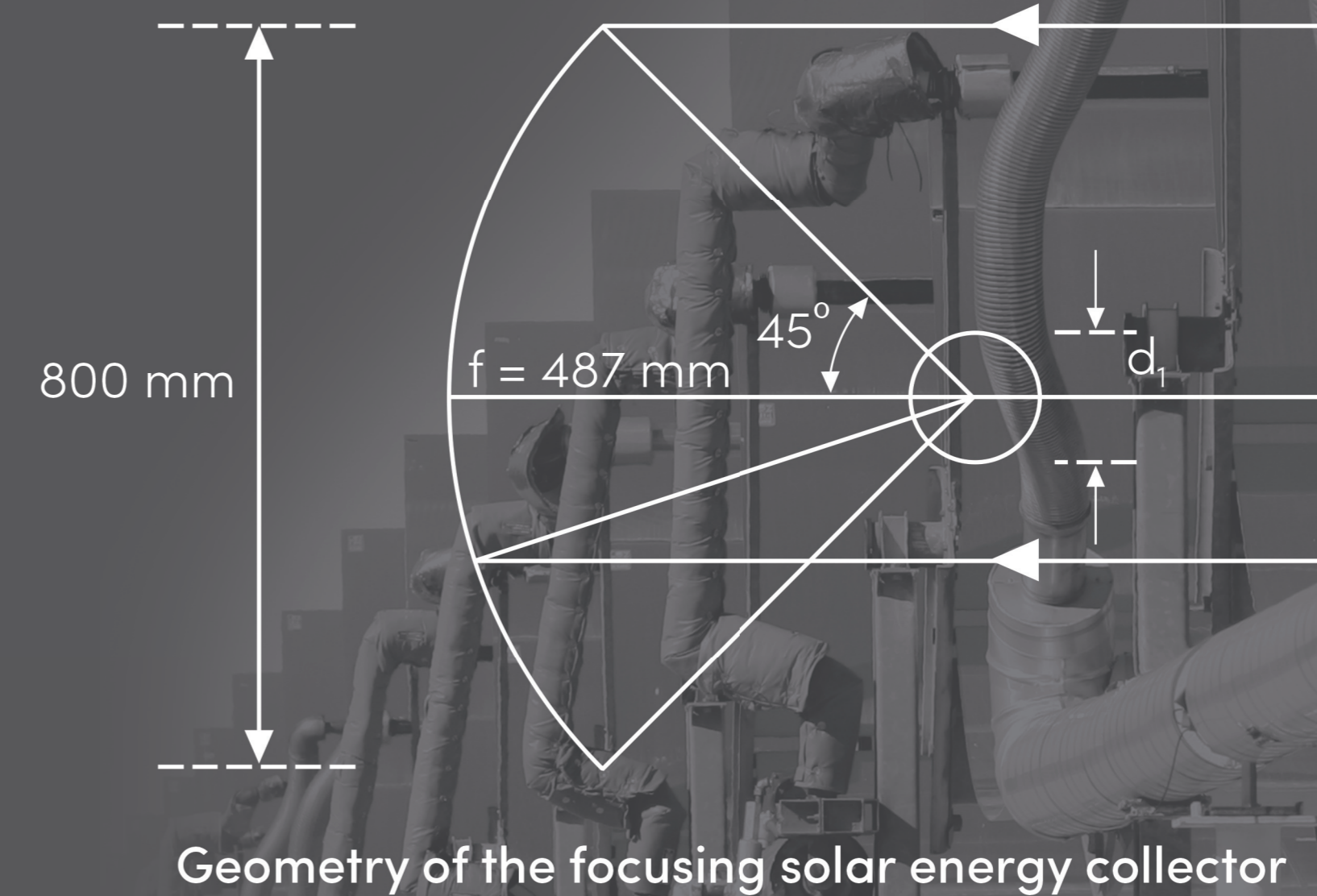
TECQUIPMENT



Flat-Plate Solar Energy Collector (TE39) **VDAS**



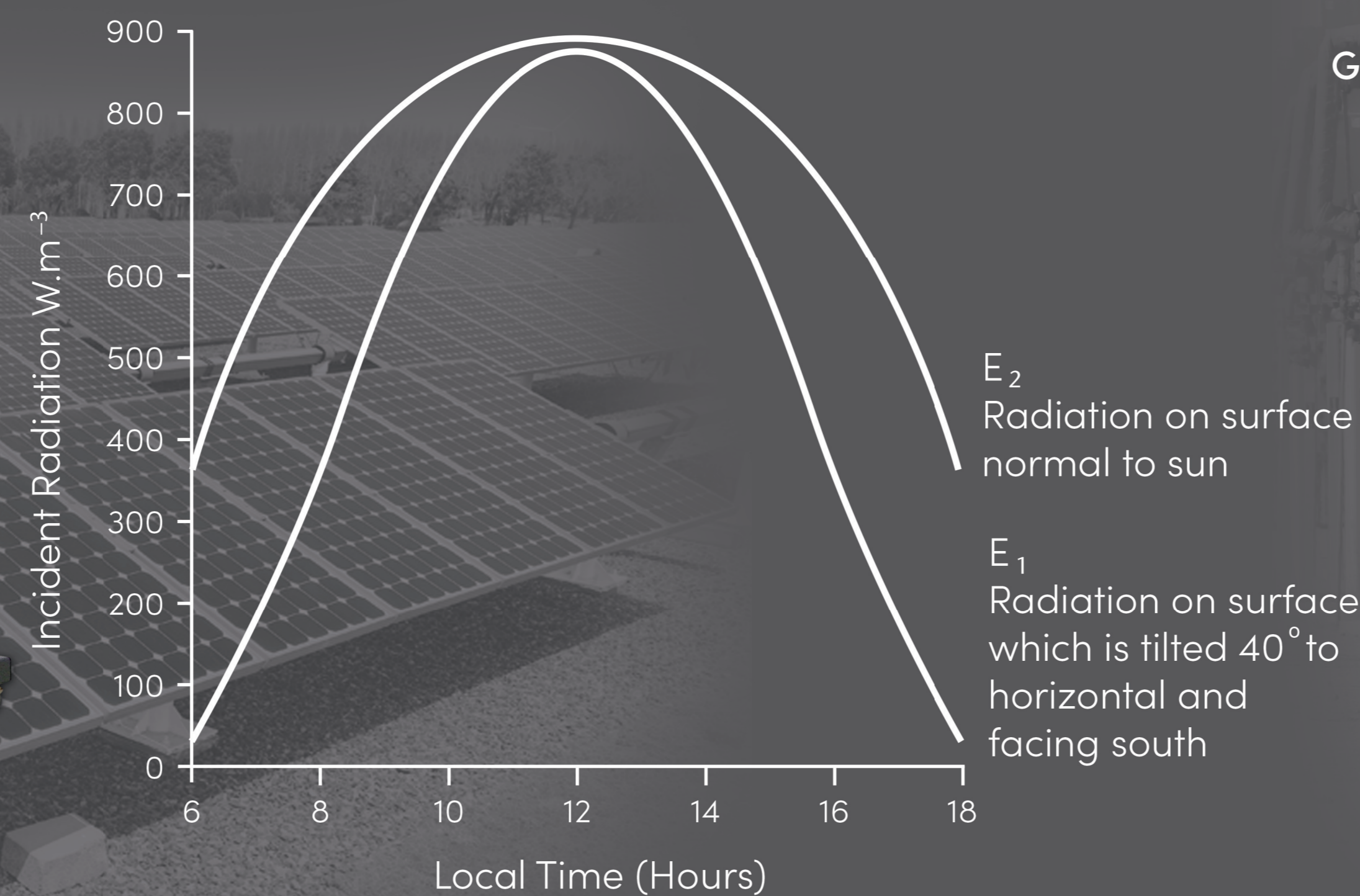
Positioning the collector for long term tests



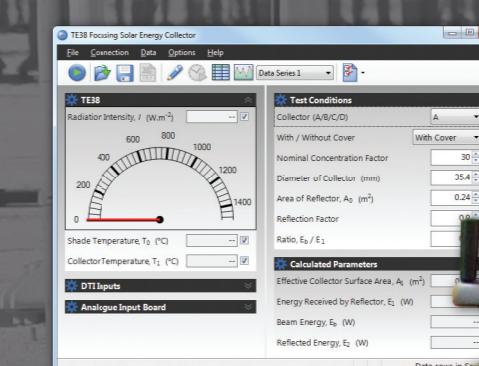
Geometry of the focusing solar energy collector



Photovoltaic Cells (TE4) **VDAS**



Radiation intensity of a flat plate absorber at Equinox and sited in London (UK)



VDAS
Focusing Solar Energy Collector (TE38)

